



DTMS-6000

HIGH-PERFORMANCE MUNICIPAL SWEEPER TRUCK

Smart. Powerful. Reliable. Built for clean, dust-free streets with advanced technology, high capacity, and easy operation—perfect for modern urban cleaning.



+91 9205551085
+91 7982456944

sales@dynacleanindustries.com



1st Floor, 13-B Kattabomman Street, Gandhi Nagar, Ganapathy,
Coimbatore, TN - 641006
4th floor, Block-B, Plot No-9, Pocket 3, Sector 17 Dwarka, Dwarka,
Delhi, 110078

Product Size & Specifications

Optimized Dimensions and Technical Precision for Superior Sweeping Performance, Long Term Durability, and Unmatched Operational Efficiency in Urban Cleaning.



Chassis	16Ton	Water Tank Capacity	1000L
Hopper Capacity	6.5m ³	Cleaning Capacity	26000m ² /h
Auxiliary Engine	110Hp	Vacuum Hose	5m
Rotary Brush	2x500mm	Hose Dia	150mm
Main Brush	1900mm	High Pressure Jet Washer	Yes
Main Brush Dia	381mm	Auxiliary Engine Fuel	Diesel (Turbo)
Sweeping Width	3000mm	Recommended Chassis	TATA 1212
Maximum Sweeping Width	2.0-15.5Km/h	Dust Tank	6000

Advanced Engineering. Reliable Performance

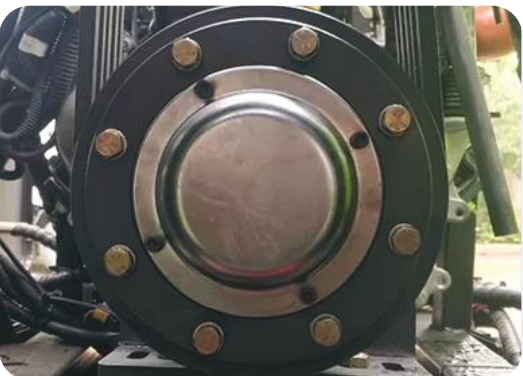
Designed for durability, ease of use, and exceptional cleaning efficiency—every component of the DTMS-6000 delivers powerful, low-maintenance street cleaning with smart functionality.



The road sweeper is equipped with a spray dust suppression device and a high-power dust suction motor that can effectively clean the dust.



The structure of the road sweeper is not complex, it is not easy to cause faults, and maintenance is more convenient and simple.



Simple operation, no complex operation, all functions are started with one button.

Key Features

- **Compact Diesel Chassis**

Built on a fuel-efficient diesel platform for reliable, long-duration sweeping in city roads and industrial areas.



- **Dual Side Brushes with Central Roller**

Enables thorough sweeping with wide coverage, reaching both sides and center for complete dust and debris removal.



- **Powerful Vacuum Suction System**

High-performance suction fan ensures fine dust, leaves, and waste are effectively collected in one pass.



- **Integrated Water Spray System**

Reduces airborne dust during operation for cleaner air and improved environmental hygiene.



- **Large Capacity Dustbin**

Optimized storage reduces the need for frequent unloading, increasing operational productivity.



- **Hydraulic System**

Reliable hydraulic control for brush adjustment, bin lifting, and water spraying ensures smooth performance.



- **Low Maintenance Design**

Simplified mechanical layout allows for easy servicing and reduced downtime.



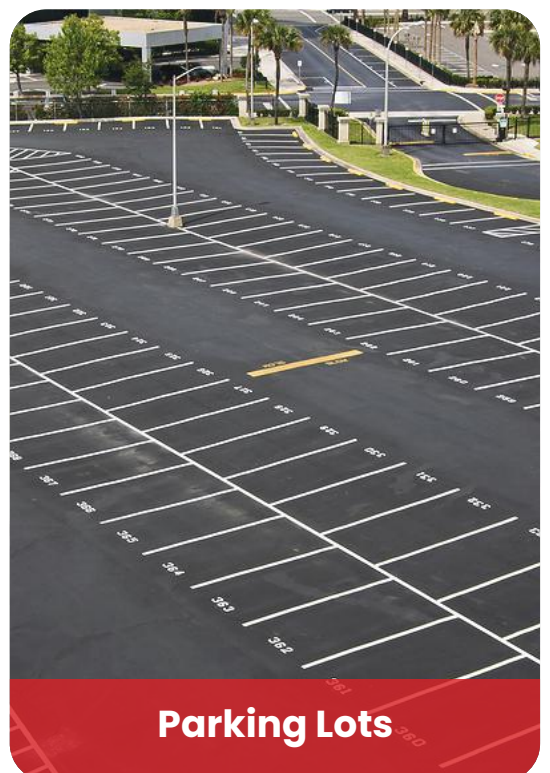
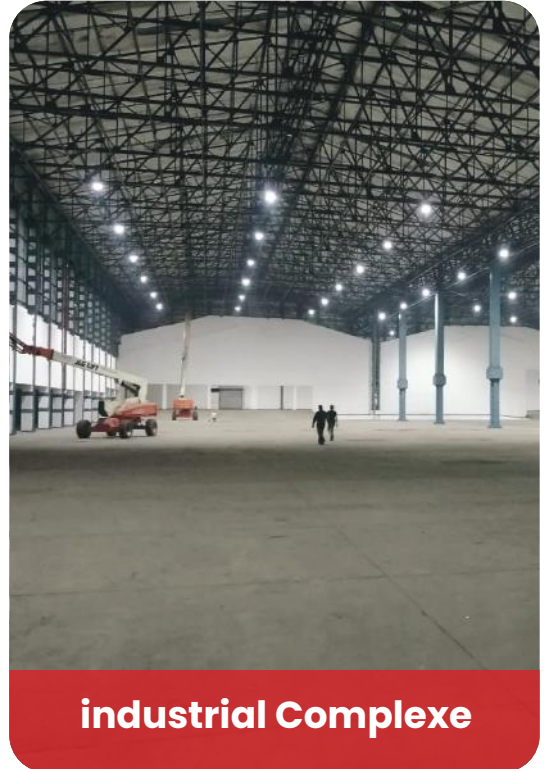
- **User-Friendly Control Panel**

Intuitive dashboard controls with one-button operation for sweeping, spraying, and suction functions.



DTMS-6000 Compact Diesel Sweeping Power

Designed for Effective Street Cleaning in Urban, Industrial, and Facility Spaces with Reliable Performance and Fuel-Efficient Operation.



Dynaclean – Redefining Cleaning Excellence



Contact Us

+91 9205551085
+91 7982456944

sales@dynacleanindustries.com



1st Floor, 13-B Kattabomman Street, Gandhi Nagar, Ganapathy,
Coimbatore, TN - 641006
4th floor, Block-B, Plot No-9, Pocket 3, Sector 17 Dwarka, Dwarka,
Delhi, 110078